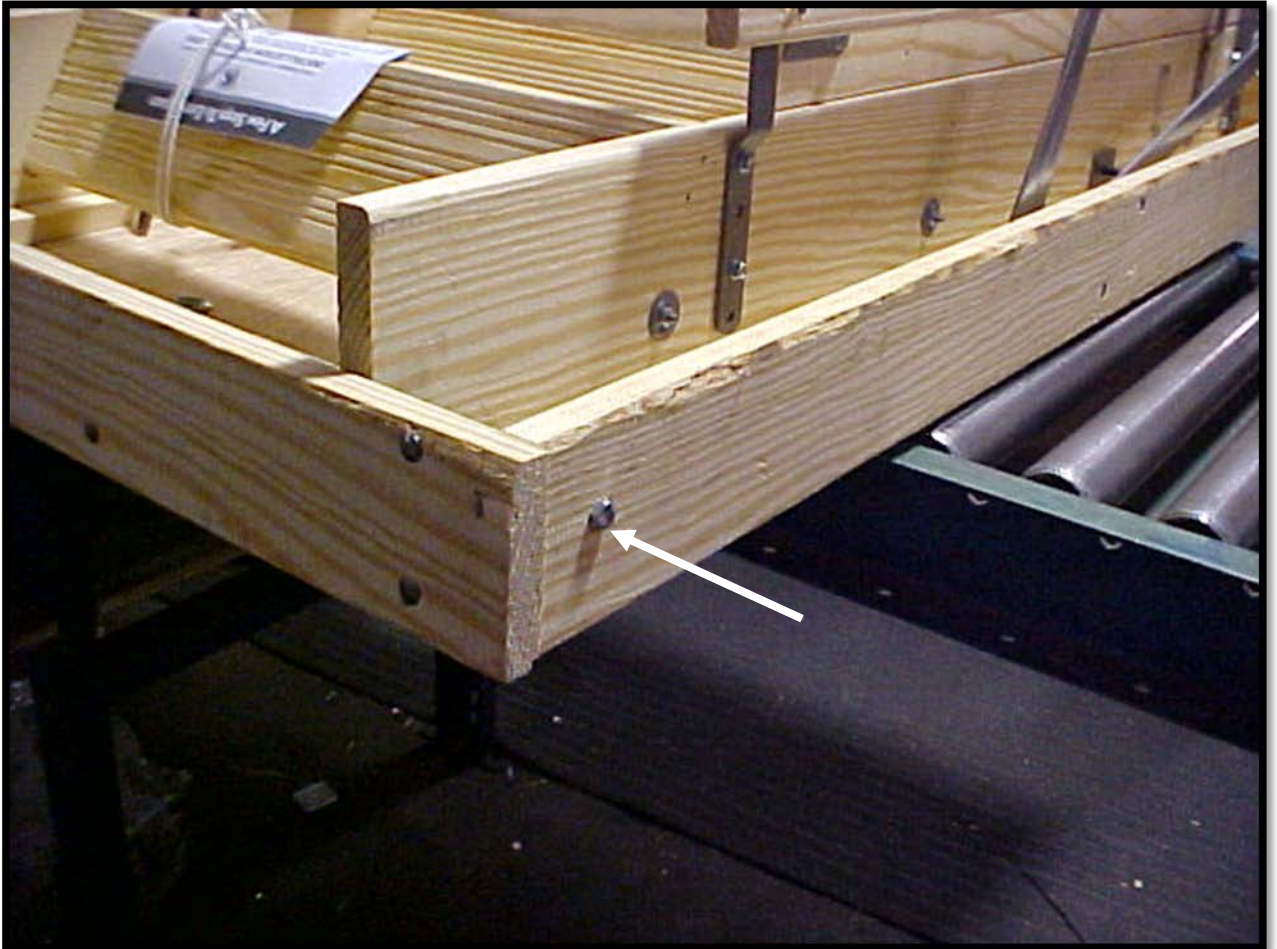


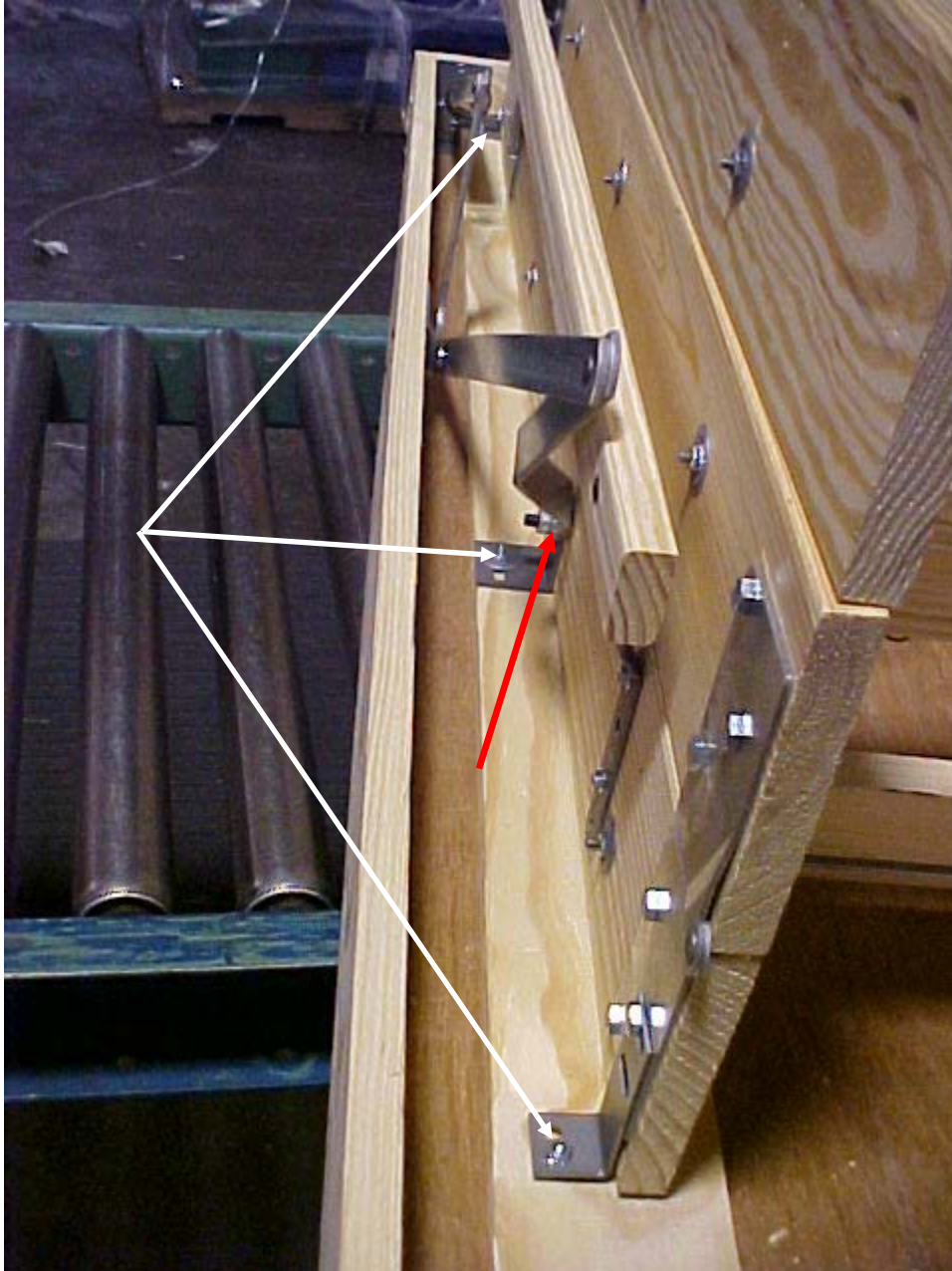
HEAD BOARD AND DOOR PANEL REPLACEMENT INSTRUCTIONS

1. Remove springs
2. Remove 2 ¼-20x1 ½ bolts attaching headboard to box siding (one on each side)



3. Hit top edge of headboard away from stair to pull staples out of box siding

4. **Remove 2 -1/2" lock nuts and bolts (one on each side)**
5. Remove 6 -3/8" nuts from brackets attaching stair to door panel (3 nuts on each side)



6. Remove box-siding assembly and set to side
7. Place replacement door panel and hinge beside old stair

2300 EAST 145th STREET

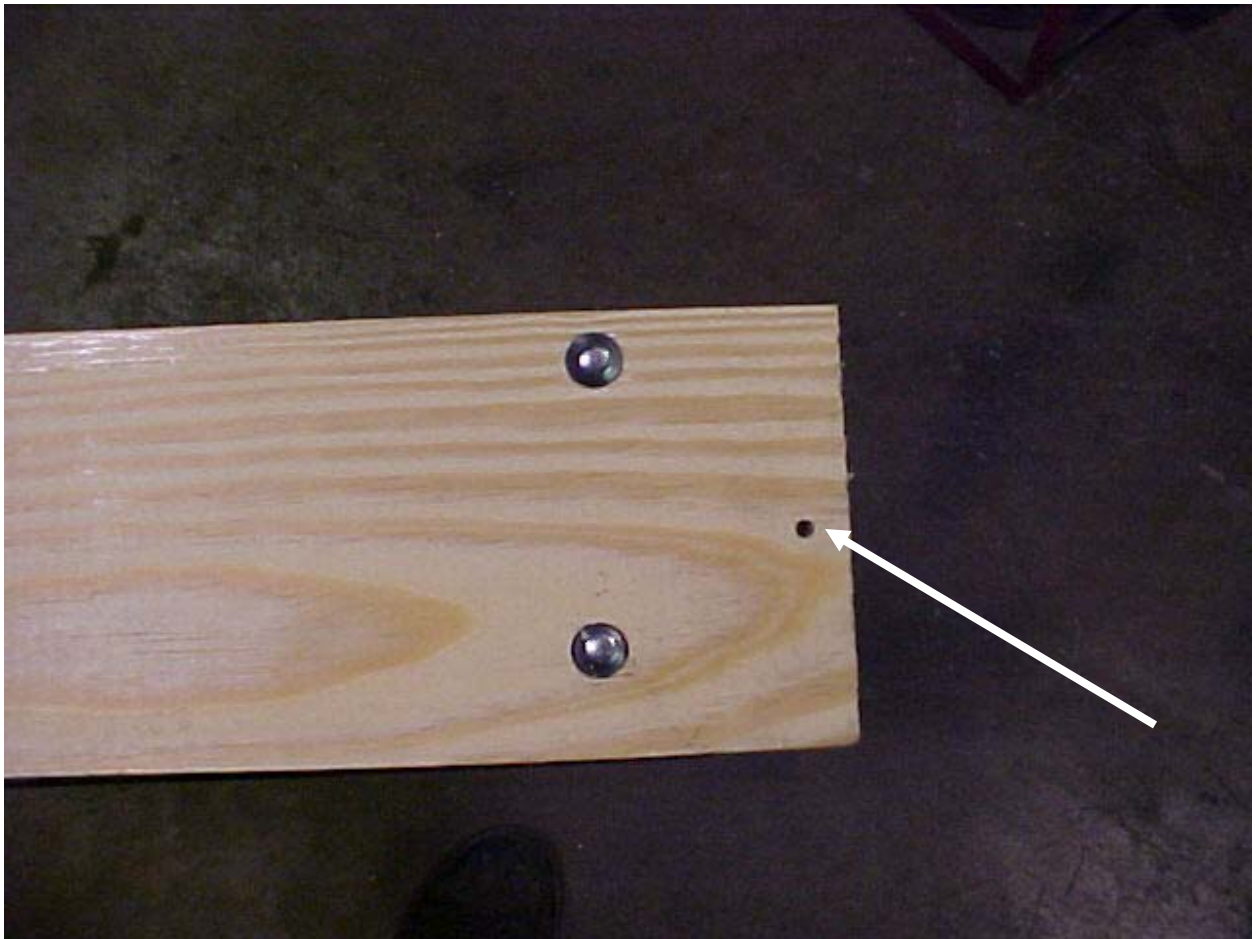
LITTLE ROCK, ARKANSAS 72206

PHONE (501) 897-5253

Help us spread the word "Like Us" on [facebook.com/CenturyIndustriesInc](https://www.facebook.com/CenturyIndustriesInc)
Watch us on YouTube at [youtube.com/user/centuryatticstair](https://www.youtube.com/user/centuryatticstair)



8. Lift stair assembly and place on new door panel.
9. Replace 6 -3/8" nuts and tighten being careful not to over-tighten and pull the heads through the plywood
10. Replace box-siding assembly and install 2 black 5/16" bolts through stair section, bracket and lower part of power arm. Finger tighten 5/16" nuts
11. Replace 2 1/4 -20 x 1 1/2 bolt
12. Tighten 2 -5/16" lock nuts
13. Install 2 1 1/4 sheet rock screws in the pre-drilled holes in the headboard



14. Reattach springs

If you have any questions, please feel free to call us at 501-897-5253 from 8 am – 4:30 pm CST and we will be glad to discuss the situation with you.

2300 EAST 145th STREET

LITTLE ROCK, ARKANSAS 72206

PHONE (501) 897-5253

Help us spread the word "Like Us" on [facebook.com/CenturyIndustriesInc](https://www.facebook.com/CenturyIndustriesInc)
Watch us on YouTube at [youtube.com/user/centuryatticstair](https://www.youtube.com/user/centuryatticstair)